

Blast Chillers CW

Blast Chiller Crosswise, 28kg

ITEM # _____

MODEL # _____

NAME # _____

SIS # _____

AIA # _____



110718 (BC28A)

Blast chiller for 1/1 GN
containers, 28 kg, from +90 to
+3°C - R134A

Short Form Specification

Item No.

- Blast chiller with digital temperature and time display
- For 10 GN 1/1 or 600x400 mm trays
- Load capacity: chilling 28 kg (UK guidelines)
- Single sensor core probe
- Operating air temperature: +3 -12°C
- Automatic and manual defrosting
- Turbo cooling function
- Specific cycles for ice cream
- Evaporator with antirust protection
- HACCP and Service alarms with data logging
- Main components in 304 AISI stainless steel
- Internal rounded corners and drain
- Cyclopentane insulation (HCFC, CFC and HFC free)
- Built-in refrigeration unit
- R134a refrigerant gas (HCFC and CFC free)
- Performance guaranteed at ambient temperatures of 40°C

Main Features

- Auto hold at temperature reached at end of blast chilling cycle.
- Remaining time estimation for probe-driven cycles based on artificial intelligence techniques (ARTE) for an easier planning of the activities.
- Single sensor core probe as standard.
- Control unit provides two large displays to read out: time, core temperature, cycle countdown, alarms, service information.
- All information related to the different operating models are recorded: date, time, cycle, core temperature, holding temperature, HACCP accordance.
- Two customizable cycles (P1 & P2) for each operating mode, allowing to set the time and air temperature. These programs can be converted into ice-cream specialized cycles (shape maintenance and holding).
- Turbo cooling: chiller works continuously at the desired temperature; ideal for continuous production.
- Hard Chilling (air temperature -12°C).
- Holding at 3 °C for chilling, automatically activated at the end of each cycle, to save energy and maintain the target temperature (manual activation is also possible).
- Blast Chilling cycle: 28 kg from 90°C up to 3°C in less than 90 minutes.
- Automatic and manual defrosting.
- Soft Chilling (air temperature -2°C).
- Performance guaranteed at ambient temperatures of +40°C.

Construction

- 304 AISI stainless steel construction throughout.
- Seamless hygienic inner cell with all rounded corners for easy cleaning.
- Swing hinged front panel for easy service access to main components.
- No water connections required.
- High density polyurethane insulation, 60 mm thickness, HCFC free.
- Ventilator swinging hinged panel for access to the evaporator for cleaning.
- Waste water can be plumbed into drain, but can also be collected in an optional waste container.
- Self contained 3/4 hp compressor.
- Refrigerant type: R134a.
- Built-in refrigeration unit.
- Removable magnetic door gasket with hygienic design.

APPROVAL: _____

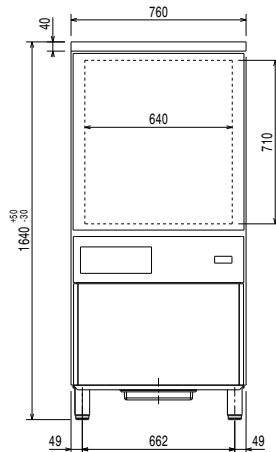
Included Accessories

- 1 of 1 single-sensor probe for blast chiller and blast chiller&freezers PNC 880213

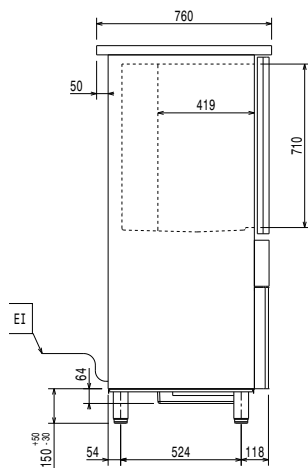
Optional Accessories

- Connectivity kit for LW and CW blast chiller&freezer (ECAP) PNC 880183
- 1 single-sensor probe for blast chiller and blast chiller&freezers PNC 880213
- Rilsan grid, 600x400 mm PNC 880864
- Plastic coated grid, 1/1GN PNC 881061
- 4 wheels for blast chillers PNC 881097
- Base for 10 GN 1/1 tray rack support for 28 kg blast chillers and blast chiller/freezers PNC 881518
- Pair of 1/1 GN grids in 304 AISI PNC 921101
- 80mm pitch side hangers for 10 1/1 GN electric oven PNC 922115
- 80mm pitch side hangers for 10 1/1 GN gas oven PNC 922116
- 60mm pitch side hangers for 10 1/1 GN electric oven PNC 922121
- 60mm pitch side hangers for 10 1/1 GN gas oven PNC 922122
- Trolley for 10 2/1 GN roll-in rack PNC 922128
- Trolley for 10 1/1 GN roll-in rack PNC 922130
- Kit to convert to 10 1/1 GN roll-in rack PNC 922201

Front

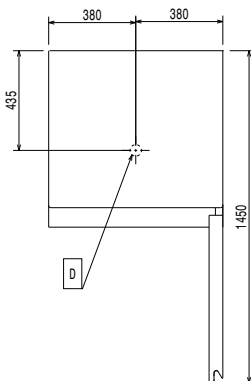


Side



EI = Electrical inlet (power)

Top



Electric

Supply voltage:
110718 (BC28A) 220-240 V/1 ph/50 Hz

Circuit breaker required

Installation:

Clearance: 5 cm on sides and back.

Please see and follow detailed installation instructions provided with the unit

Capacity:

GN: 10 - 1/1 containers

Key Information:

External dimensions, Width: 760 mm
 External dimensions, Depth: 760 mm
 External dimensions, Height: 1640 mm
 Net weight: 124 kg
 Shipping weight: 144 kg
 Shipping volume: 1.33 m³

Refrigeration Data

Refrigerant type: R134a
 GWP Index: 1300
 Refrigeration power: 1419 W
 Refrigeration power at evaporation temperature: -10 °C
 Refrigerant weight: 1530 g

Product Information (EN17032 – Commission Regulation EU 2015/1095)

Energy consumption, cycle (chilling): 0.053 kWh/kg
 Chilling Cycle Time (+65°C to +10°C): 116 min
 Full load capacity (chilling): 40 kg